

# PHILIPS

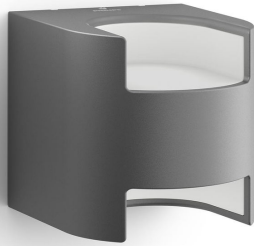
## Wall light

myGarden

Grass

anthracite

LED



17321/93/16



## Enjoy a beautiful garden with light

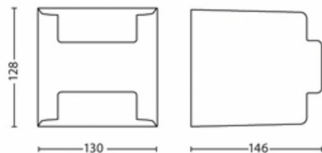
This neat and tidy Philips Grass LED outdoor wall light in anthracite is made of durable die-cast aluminium. The unique cutaway cube design lights up your wall from top to bottom with two brilliant beams of warm white light.

### Sustainable light solutions

- Energy saving
- High quality LED light
- Long operating life of up to 25 years
- Warm white light
- Philips offers a 5-year warranty on the LED module and driver

### Designed for your garden

- IP44 - weatherproof



# Highlights

## Energy saving



This Philips energy-saving lamp conserves energy compared with traditional light sources, helping you to save money on your electricity bills and do your bit for the environment.

## High quality LED light



The LED technology integrated into this Philips lamp is a unique solution developed by Philips. It turns on instantly, enables an optimal light output and brings out vivid colours in your home.

## Long operating life



A light source you can trust. The LED bulb, delivered with this Philips LED lamp, will last up to 25,000 hours (which equals 25 years on the basis of an average use of 3 hours/day with at least of 13,000 on/off switching cycles). It feels so good to think that you won't have to worry about maintenance or light bulb replacement while having the perfect light ambience in your home.

## Warm white light



Light can have different colour temperatures, indicated in units called Kelvin (K). Lamps with a low Kelvin value produce a warm, more cosy light, while those with a higher Kelvin value produce a cool, more energising light. This Philips lamp offers warm white light for a cosy atmosphere.

## 5-year warranty on LED system



On top of the standard 2-year warranty for this lamp, Philips offers a 5-year warranty on the LED system, meaning the LED module and the driver in this lamp.

## IP44 - weatherproof



This Philips outdoor light is especially designed for humid outdoor environments. It was tested rigorously to ensure its water resistance. The IP level is described by two figures: the first one refers to the protection level against dust, the second against water. This outdoor light is designed with IP44: it is protected against splashing water. This product is most commonly used and ideal for general outdoor use.

# Specifications

## Design and finishing

- Colour: anthracite
- Material: aluminium

## Extra feature/accessory incl.

- 5 year warranty on the LED module: Yes
- Fully weatherproof: Yes
- LED integrated: Yes

**Garden area**

- Garden area: Back garden, Front garden

**Miscellaneous**

- Especially designed for: Garden and Patio
- Style: Contemporary
- Type: Wall light
- EyeComfort: Yes

**Power consumption**

- Energy Efficiency Label: Built in LED

**Product dimensions and weight**

- Height: 12.8 cm
- Length: 12.9 cm
- Net weight: 0.570 kg
- Width: 14.5 cm

**Service**

- Warranty: 2 year(s)

**Technical specifications**

- Lifetime up to: 25,000 h
- Light source equivalent to traditional bulb of: 35 W
- Total lumen output fixture: 800 lm
- Bulb technology: LED
- Light colour: warm white
- Mains power: 50-60 Hz
- Fixture dimmable: Yes
- LED: Yes
- Built-in LED: Yes
- Energy class included light source: Built-in LED
- Number of bulbs: 2
- Wattage bulb included: 4.5 W
- IP code: IP44
- Class of protection: II - double insulated
- Light source replaceable: No

**Packaging dimensions and weight**

- EAN/UPC - product: 8718696131589
- Net weight: 0.570 kg
- Gross weight: 0.660 kg
- Height: 161.000 mm
- Length: 136.000 mm
- Width: 136.000 mm
- Material number (12NC): 915005196801



Issue date: 2020-12-12  
Version: 0.626

© 2020 Signify Holding. All rights reserved. Signify does not give any representation or warranty as to the accuracy or completeness of the information included herein and shall not be liable for any action in reliance thereon. The information presented in this document is not intended as any commercial offer and does not form part of any quotation or contract, unless otherwise agreed by Signify. Philips and the Philips Shield Emblem are registered trademarks of Koninklijke Philips N.V.

[www.lighting.philips.com](http://www.lighting.philips.com)