

PHILIPS

Enrave large ceiling lamp

Hue White Ambiance

Integrated LED

Bluetooth control via app

Includes dimmer switch

Add Hue Bridge to unlock more



41160/30/P6



Easy smart lighting

Designed for large spaces, such as the living room, the large Enrave ceiling light in black has a contemporary design and warm-to-cool white light. Cast a ring of light against the ceiling while shining a powerful glow downwards.

Limitless possibilities

- Control lights instantly

Easy smart lighting

- Control lights with your voice*
- Unlock full suite of smart light features with Hue Bridge
- Set the right mood with warm-to-cool white light
- Optimised light recipes for your daily activities

Highlights

Control lights instantly



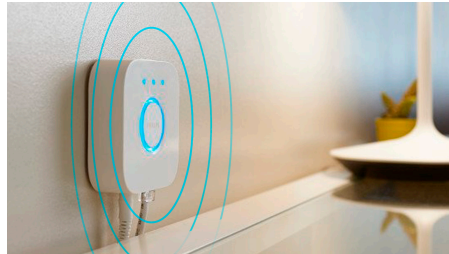
Get instant control over your Philips Hue smart lights with the Hue dimmer switch. With the touch of a button, your entire household can instantly dim or brighten the room, turn lights on and off, or set light scenes.

Control lights with your voice*



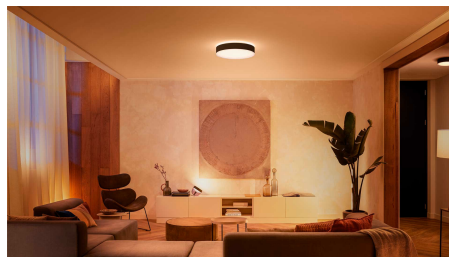
Philips Hue works with Amazon Alexa and the Google Assistant when paired with a compatible Google Nest or Amazon Echo device. Simple voice commands allow you to control multiple lights in a room, or just a single lamp.

Unlock full suite of smart light features with Hue Bridge



Add a Hue Bridge (sold separately) to your smart lights to experience the full suite of Philips Hue features. With a Hue Bridge, you can add up to 50 smart lights to control throughout your home. Create routines to automate your entire smart home lighting set-up. Control your lights while away from home or add accessories such as motion sensors and smart switches.

Set the right mood with warm-to-cool white light



Choose from over 50,000 shades of warm-to-cool white light to create the perfect ambiance in your home for each activity and time of day. Use bright, white light each morning to start the day energised and alert, or match your evening wind-down routine with a dim golden glow.

Optimised light recipes for your daily activities



Use the preset Philips Hue light recipes to fit your mood or activities throughout the day. Start your day with the bright white light of the Energise light recipe, or unwind with the subtle, soft light of Relax. Reading a book in the bath? Set the Read recipe for just the right light.

Specifications

Design and finishing

- Colour: black
- Material: metal, synthetics

Extra feature/accessory incl.

- Dimmable with the Hue app and switches: Yes

Miscellaneous

- Especially designed for: Living Room and Bedroom
- Style: Modern
- Type: Ceiling light

Power consumption

- Energy efficiency label (EEL): F

Product dimensions and weight

- Height: 8.4 cm
- Length: 42.5 cm
- Width: 42.5 cm

Service

- Warranty: 2 year(s)

Technical specifications

- Lifetime up to: 25,000 h
- Bulb technology: LED
- Light colour: 2200–6500 Hue White Ambiance
- Mains power: 50–60 Hz
- Fixture dimmable: Yes
- LED: Yes
- Built-in LED: Yes
- Number of bulbs: 1
- Wattage bulb included: 33.5 W
- IP code: IP20
- Class of protection: I – earthed
- Lumen output at 2,700 K (out-of-the-box setting): 3,300 lm
- Lumen output at 4000K: 4,300 lm
- Replaceability of control gears: Replaceable control gear by a professional
- Replaceability of light source: Replaceable LED light source by a professional

Packaging dimensions and weight

- EAN/UPC – product: 8718696176467
- Net weight: 3.194 kg
- Gross weight: 4.107 kg
- Height: 100.000 mm
- Length: 502.000 mm
- Width: 476.000 mm
- Material number (12NC): 915005996901



Issue date: 2022-01-20
Version: 0.290

© 2022 Signify Holding. All rights reserved. Signify does not give any representation or warranty as to the accuracy or completeness of the information included herein and shall not be liable for any action in reliance thereon. The information presented in this document is not intended as any commercial offer and does not form part of any quotation or contract, unless otherwise agreed by Signify. Philips and the Philips Shield Emblem are registered trademarks of Koninklijke Philips N.V.

www.lighting.philips.com